

GLE-Guard



Mercedes-Benz





A safe place to be. On or off the road.

People with a self-confident approach to life want to be in a position to decide for themselves on their interests and activities. This includes being present at important events and being often on the road – without any restrictions. The GLE-Guard delivers the comfort you desire for your on-road travel together with extensive protection for you and your passengers. The raised seating position gives you clear all-round vision in every situation. As a specially armoured vehicle, the GLE-Guard meets all the requirements of resistance class VR4, which includes handguns up to .44 Magnum. In the enhanced-protection version according to resistance class VR6, the requirements go as far as Kalashnikov calibre 7.62 x 39. Your GLE-Guard thus offers protection not only against growing street crime, but also against the threat from the world’s most commonly used assault rifle, of which it is estimated that 80–100 million units have been produced. Even when the road conditions deteriorate or you go off-road, your personal protection space is maintained: 4MATIC permanent all-wheel drive guarantees optimal traction and increased driving stability.

Ballistic protection levels by weapons and calibres to BRV 2009.

BRV 2009	Weapon type	Resistance
VR1		Weapons up to .22 LR
VR2		Weapons up to 9 mm Luger (Parabellum)
VR3		Weapons up to 9 mm Luger (Parabellum)
VR4		Handguns up to .44 Magnum
VR5		Handguns up to .357 Magnum
VR6		Rifles up to calibre 7.62 x 39 mm, full steel jacket, iron core

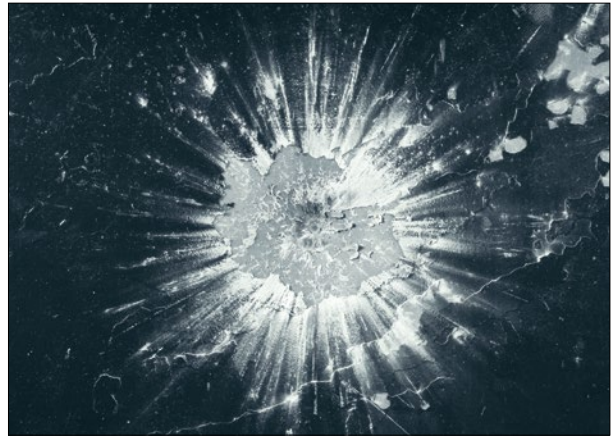


The GLE-Guard meets the high-protection requirements of resistance classes VR4 and VR6 according to BRV 2009. The standard defines parameters such as projectile velocity, distance between weapon and vehicle as well as the muzzle energy in joules. With the goal of maximum possible approximation to real-world conditions, testing covers not only the most frequent firing angles between 45° and 90°, but also the targeting of gaps, such as between doors and body. All results meet the stringent requirements of the official BRV standard 2009 according to VPAM.

VR = Vehicle Resistance
BRV = Standard for the testing and certification of blast-resistant vehicles
VPAM = Association of test laboratories for bullet-resistant materials and constructions

Facts that give you safety. And reassurance.

In view of rising levels of street crime and growing threats in everyday situations, your GLE-Guard with its integrated concept based on resistance classes offers a defined degree of protection. In tune with your personal lifestyle, this specially armoured vehicle comes with a host of mature details designed to give you a total feeling of safety supported by clear and verifiable facts. This includes intelligent solutions that also eliminate the feared threats at supposed weak points, as well as high standards in terms of the perfection and precision of materials and build quality.



Bullet-proof glass for all-round protection.

For example, the multi-layer glass features a special sandwich structure as well as an additional inner layer of polycarbonate to prevent the penetration of certain projectiles or other threats while at the same time guarding against glass splinters in the interior. With the so-called “multi-hit” testing method, in which a salvo of shots is fired in a triangular pattern at the windscreen and side windows, the GLE-Guard once again proves its resistance to projectile penetration. In addition, every GLE-Guard has gone through a host of other tests and inspections.



Even under fire the interior remains a personal safe environment.

It meets the test specifications of international authorities with top ratings. The bullet-resistant interior of this certified specially armoured vehicle guarantees your personal safety, which remains intact if, for example, a tyre loses air. The run-flat MOExtended tyres and 4WD strengths of your GLE-Guard are uninfluenced by such threat scenarios.

Invisible at first glance. Convincing from the outset.

One of the special things about your GLE-Guard specially armoured vehicle is that it doesn’t let everyone know what’s inside it. This discreet inconspicuousness is an important aspect of your protection, and it also means that you don’t need to hold back when it comes to comfort, spaciousness and driving pleasure. There’s no secret to this, just a unique principle: the protective components are already factored into the development of the vehicle and are installed under the same outer skin as that of its standard-production counterpart. Highly effective protection is the result of uncompromising quality in terms of production and development as well as high standards of innovation and technology.

- The integrated protection concept of Mercedes-Benz Guard.
- 1. Specially selected, specially integrated: materials for selective strengthening of the body structure and combination of steel, glass and plastics offering defined protection according to resistance classes.
 - 2. Adapted chassis/suspension: specially strengthened components or newly developed chassis/suspension and adaptation of the electronic control systems ensure that, despite the extra weight, there are the same levels of safety and ride comfort as in a standard-production Mercedes-Benz.
 - 3. Special glass with sandwich structure: high-strength and splinter-proof thanks to an additional inner layer of polycarbonate.
 - 4. Proven intelligence: refined constructions and overlap systems provide especially effective protection in sensitive areas.
 - 5. Assured mobility thanks to run-flat tyres: MOExtended tyres with strengthened sidewalls are capable of taking the weight in case of a loss of pressure while ensuring that the vehicle can continue for a limited distance.



Model	GLE 350 d 4MATIC	GLE 500 4MATIC	GLE 500 4MATIC
Protection class BRV 2009	VR4	VR4	VR6
No. of cylinders/arrangement	6 / V	8 / V	8 / V
Total displacement (cc)	2987	4663	4663
Rated output (kW at rpm)	190/3600	320/5250	320/5250
Acceleration from 0-100 km/h (sec.)	9.4	6.5	6.8
Top speed electronically limited	210	210	200
Fuel consumption (l/100 km), combined <small>Figures in parentheses without ECO start/stop function*</small>	7.5	12.2 (13.2)	12.6 (13.6)
CO ₂ emissions (g/km), combined*	197	285 (309)	295 (318)
Emission class	Euro 6	Euro 6	Euro 6
Payload (kg)	585	565	455

* The indicated figures were measured according to the prescribed measuring method (Directive 80/1268/EEC in the currently applicable version). The figures are not based on an individual vehicle and do not constitute part of the product offer; they are provided solely for purposes of comparison between different vehicle models.

VR4*

*Safety comes first.

The integrated protection system turns your GLE-Guard with resistance class VR4 into a personal protection space with special glass all-round. This gives you new-found freedom enhanced by safety and ample comfort. And that means no restrictions on you and your sphere of action, despite the trend in some regions of the world towards increasing levels of street crime.



VR6*

*An even tougher operator.

Even in the face of growing threats, you'll feel safe inside your GLE-Guard. Special armouring in compliance with the requirements of resistance class VR6 makes for enhanced interior protection with a sophisticated partition system, allowing you to concentrate fully on your plans.





Strong solutions for supposed weak points: overlapping constructions at the mirror triangle.

Seamless protection.

Innovative concepts and their perfect implementation increase personal safety even at so-called weak points where various materials come together. It is precisely here that your GLE-Guard with its integrated protection system shows its strength. Overlapping constructions consisting of highly



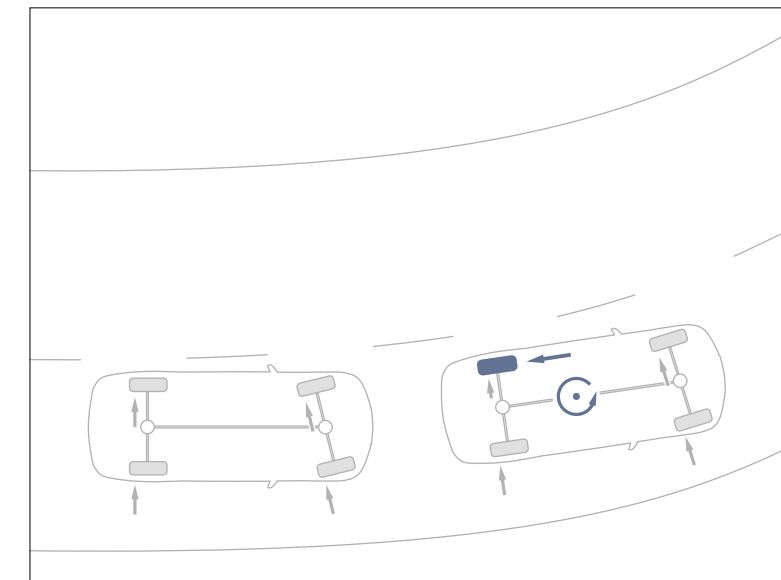
The labyrinth system provides for seamless protection at points where different materials come together.

reinforced armour in special steel create a labyrinth-type system. An intelligent solution preventing projectiles from penetrating the passenger compartment and eliminating supposed weak points right from the start. That, in a nutshell, is the concept of seamless protection ex factory.

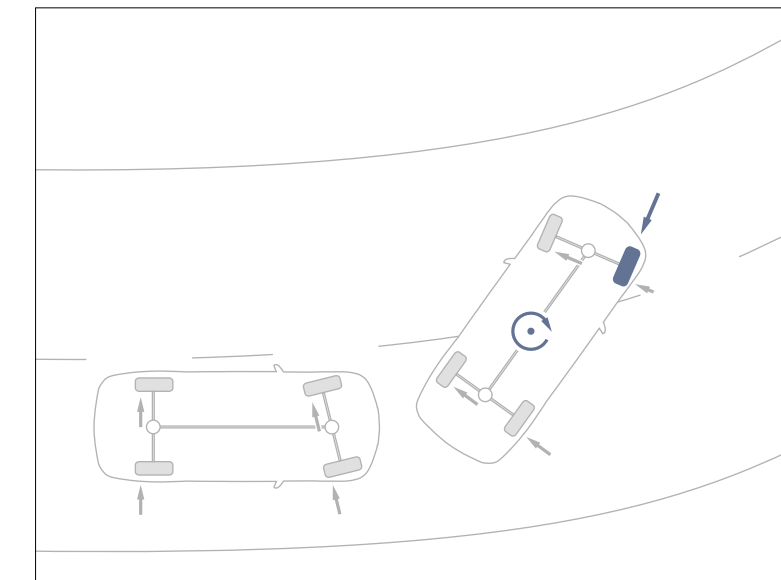


Weighing up the benefits.




The various protective components that make your GLE-Guard strong add their fair share of weight. The additional weight does not restrict handling safety and driving pleasure in any way, however. Development of the vehicle gave careful consideration to the impact of the reinforcements in relation to the brakes, tyres, axles and body connections. The special dimensions result in stability, control and maximum driving pleasure.



ESP understeer: the adaptation of the system to the added weight ensures directional stability even in bends by braking the inside rear wheel.



ESP oversteer: braking the outside front wheel with due regard to the added weight helps to prevent the rear end from breaking away.

-  ESP brake intervention
-  Lateral tyre forces
-  Yaw moment with vehicle centre of gravity

Mobile in an emergency.

Anyone who suddenly finds themselves in the middle of a danger zone has one main thought: to get out of it as quickly as possible. MOExtended run-flat tyres with reinforced side walls take the car's weight even when they are deflated. This ensures the vehicle can keep driving over a certain distance, so as to get it to safety. The decisive factor when it comes to stability and ability to stay on track is the alignment of the electronic control systems. The sensitive modification of ESP® and ABS to cope with the extra weight and resulting changes in driving characteristics is naturally a feature of your GLE-Guard's integrated protection system. This ensures the handling, cornering and braking characteristics of the protective vehicle remain stable, even in extreme conditions.



The panic alarm system with intermittently blinking exterior mirror and built-in microphone.



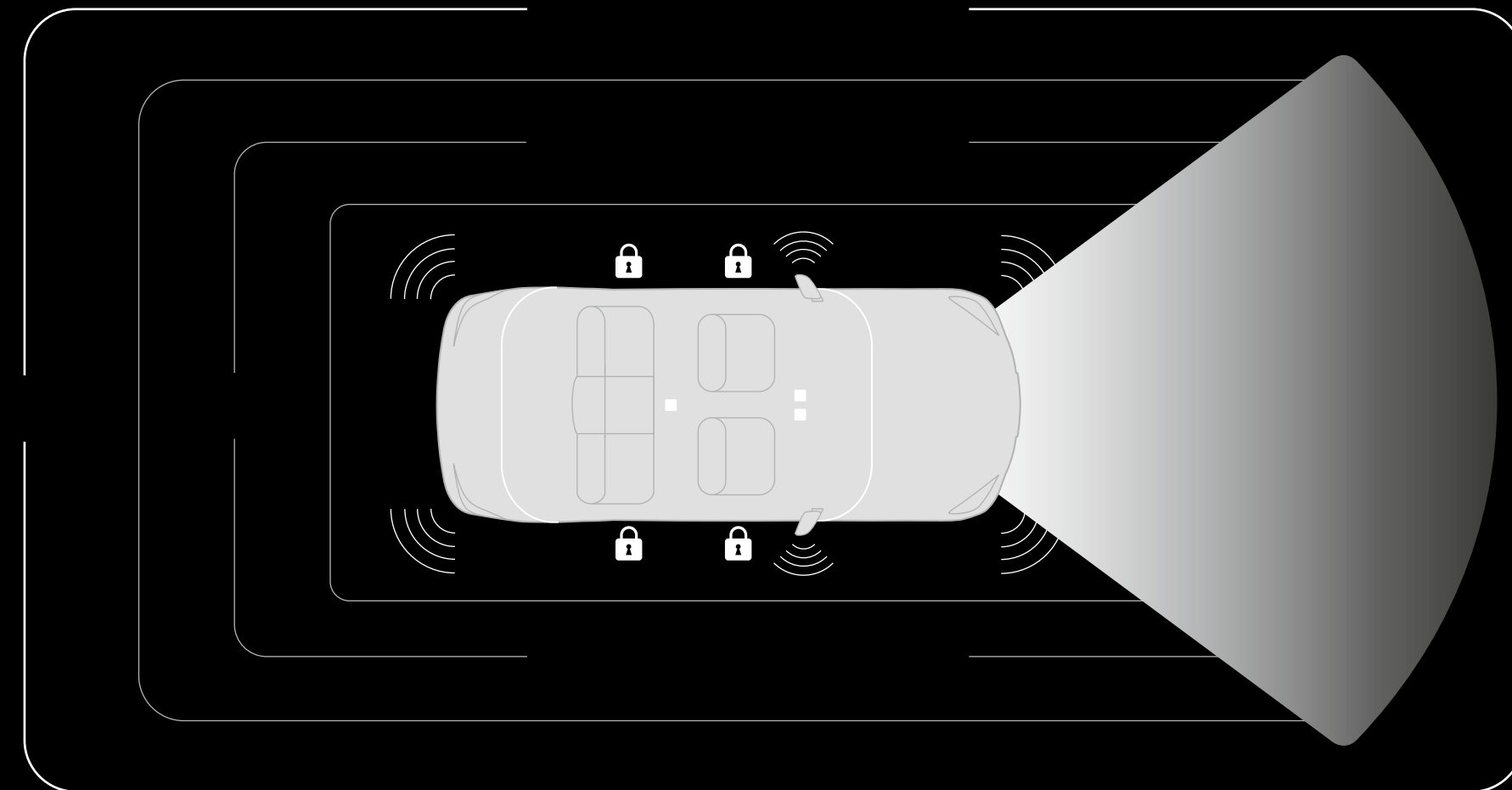
An intercom allows communication with the outside world even during a lockdown.



The panic alarm system is very simple to activate from any seat.

Alarm at the push of a button.

The panic alarm system is especially refined and designed to enhance your personal protection by directing great attention to the threat situation. The system is very simple to activate from any seat inside your GLE-Guard. At the push of a button all doors are locked, indicators and headlamps flash intermittently and a deafening signal sounds. The microphone built into the exterior mirror and the intercom maintain contact to the outside world for those inside the vehicle.



Invisible on the outside – indispensable on the inside.

The term 'integrated protection system' already hints at the vehicle's special strength. Tucked away in your GLE-Guard is an array of measures and components which work together for your safety, having been precisely coordinated with each other and the vehicle right from the development phase, allowing timely, appropriate planning. The inconspicuousness of the protection components is another crucial feature of the sophisticated system. Perfectly hidden behind the appearance of a series-production car, the integrated protection system delivers absolutely everything needed to keep you safe. And it's sufficient that you know and we know all that has gone into making this vehicle, so that you can feel safe and protected.





Perceived safety, measurable protection ex-factory. Service worldwide.

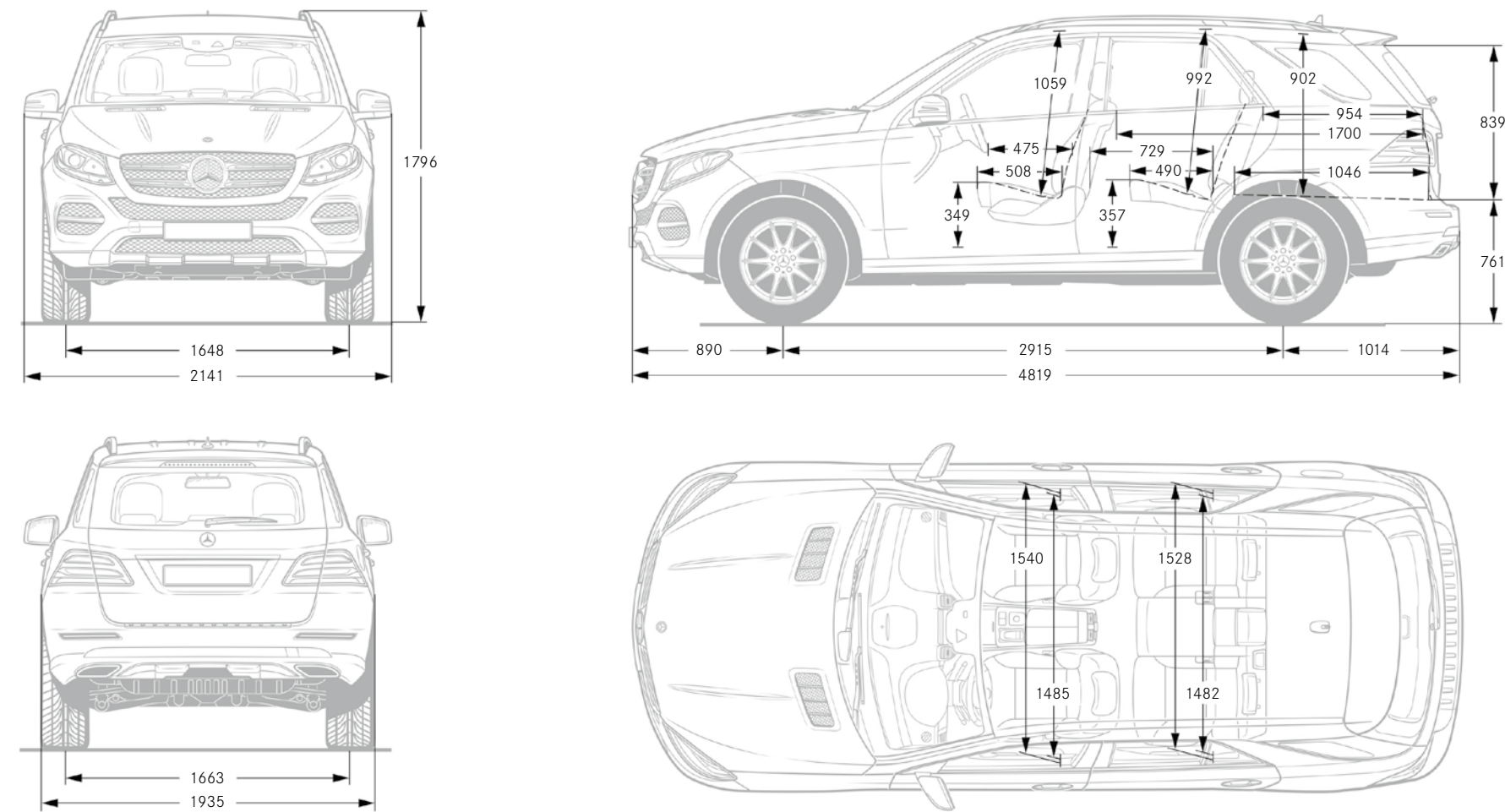
Your GLE-Guard also offers complete peace of mind when it comes to regular maintenance and repairs after sustaining damage. The sophisticated protection concept of course likewise includes specially trained staff, the exclusive use of genuine replacement parts and expert local service. Prior to purchase and long after, besides our sales team our technical support staff are also available to answer all your questions and cater to your wishes. You can rest assured that your GLE-Guard is always in the best hands at your authorised Mercedes-Benz dealership, where you will additionally enjoy the benefits of VIP treatment. The development and integration of the protective components as a comprehensive system prove a strong advantage for service and maintenance long after buying the vehicle. Because care is taken during design and installation to ensure access to possible wear parts or damaged elements. This provides for seamless protection that lasts.

Technical data.

	GLE 350 d 4MATIC	GLE 500 4MATIC	GLE 500 4MATIC
Resistance class BRV 2009, version 2	VR4	VR4	VR6
Number of cylinders/EU standard	V6	V8	V8
Total displacement in cc	2987	4663	4663
Rated output ¹ in kW at rpm	190/3600	320/5250	320/5250
Rated torque in Nm at rpm	620/1600–2400	700/1800–4000	700/1800–4000
Fuel consumption in l/100 km, CO ₂ emissions ² (g/km)			
Urban	8.5 (224)	15.9 (372)	16.1 (376)
Extra-urban	6.9 (183)	10.1 (237)	10.5 (246)
Combined	7.5 (197)	12.2 (285)	12.6 (295)
Gross vehicle weight	3350	3350	3450
Kerb weight (EC, incl. driver [75 kg] + tank 90% full)	2765	2785	2995
EC payload	585	565	455
Acceleration from 0 to 100 km/h in s	9.4	6.5	6.8
Top speed in km/h ³	210	210	200
Boot capacity (approx., litres)	690 (2010)	690 (2010)	650
Tank capacity/incl. reserve (litres)	93 (12)	93 (12)	93 (12)
Tyres	265/45 R20 MOE	265/45 R20 MOE	265/45 R20 MOE
Number of seats	5	5	5

¹ Figures according to Directive 80/1269/EEC in the currently applicable version.
² The figures shown were obtained in accordance with the prescribed measuring process (Directive 80/1268/EEC in the currently applicable version).
The figures are not based on an individual model and do not constitute part of the product offer; they are provided solely for purposes of comparison between different vehicle models.
³ Electronically limited.

Dimensions.



All dimensions in millimetres. The dimensions shown are mean values and apply to standard-specification, unladen vehicles.

Take-back of end-of-life vehicles. At the end of its long life, you can return your GLE-Guard to us for environment-friendly disposal in accordance with the European Union (EU) End-Of-Life Vehicle Directive. But that day lies a long way off.

A network of vehicle take-back depots and dismantling facilities has been established to make it as easy as possible for you to return your vehicle. You can return your vehicle to one of these enterprises free of charge. By doing so, you make an important contribution to completing the recycling process and conserving resources.

For more information about the recycling and disposal of end-of-life vehicles, and the take-back conditions, please visit your national Mercedes-Benz website.

Please note: Changes may have been made to the product since going to print on 18.04.2016. The manufacturer reserves the right to make changes to the design, form, colour or specification prior to delivery, provided these changes, while taking into account the interests of the vendor, can be deemed reasonable with respect to the purchaser. Where the vendor or the manufacturer uses symbols or numbers to describe an order or the subject of an order, no rights may be derived solely from these. The illustrations may include accessories and optional extras which do not form part of the standard specification. Actual colours may differ slightly from those shown owing to the limitations of the printing process. This brochure may also feature models and services not available in individual countries. Any statements about statutory, legal and fiscal regulations and impacts are valid only for the Federal Republic of Germany at the time this brochure went to print. Please consult your nearest authorised Mercedes-Benz dealer for current and more specific information.

www.mercedes-benz.com