

DNW



iDoor

FULLY AUTOMATIC SLIDING DOOR SYSTEM

CONTEMPORARY DESIGN

COMPACT SIZE
SMART CONTROL

77mm W x 75mm H for modern design.
Offering safe and reliable door operation.

Automatic Sliding Frameless Glass Door System

Features:

1. Easy installation which can be one man job.
2. Long durability with 3 years warranty and EN16005 500,000 cycles tested.
3. Environment friendly with EN61000 Electromagnetic compatibility tested and low noise of Max. 55dB on 80kgs door.
4. Work safety that the door will auto return upon hitting people and change to manual operation if no electricity
5. Low energy consumption
6. Wide range power acceptance from 110V to 240V which good to use on unstable power area.
7. No maintenance required.
8. Elegant and contemporary design with 77X75mm ultra small track, no glass cut out and no visible hardware outside the track.

Functions:

1. **Push & Go**
Door opens with a slight push when the motion sensor or switch malfunctions.
2. **Permanent Open**
Hold-open function with adjustable time delay .
3. **Manual access**
Automatically shifts to manual mode during power failure.
4. **Hit & Return**
Door retracts when it detects an obstruction.
5. **Additional Accessories:**
Switches, Motion sensors, LED lights, UPS and central control units optional.

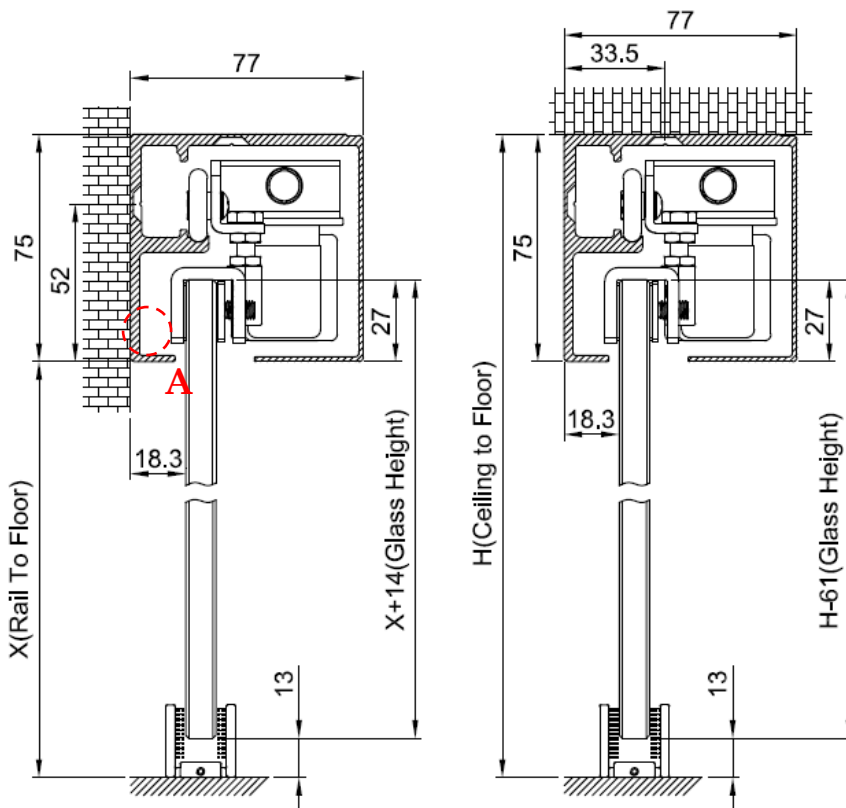
The door is not to use as security or storm protected device, The max. single door weight is 80kgs (176lbs)

Technical data:

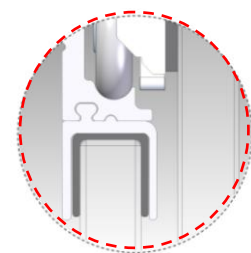
1. Power voltage
100-240V AC ; 50/60 Hz
2. Motor circuit protection on site :1.8A
3. Power consumption
Stand-by mode : 5W
Automatic mode max. : 40W
4. Operating sound max. 55dB
5. Cable suggested 3x0.75 mm
Rohs compliant.

Wall Mounted

Ceiling Mounted



**Extra clamp Added (A)
(Option) For fixed glass panel**



**Motion Sensor
(Silver & Black)**



(Unit: MM)

****How To Order: Please Specify**

1. Finish And Length of Aluminum Rail
2. Door Weight, Single or Double Doors

(Picture shown in Silver)