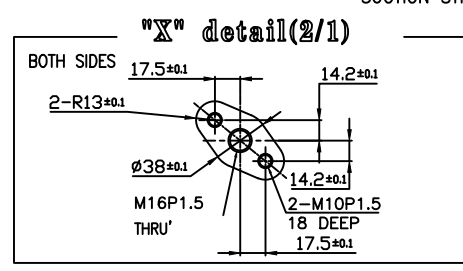
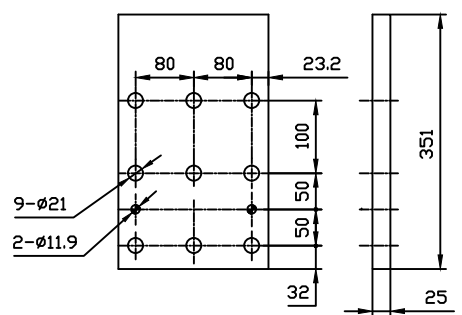
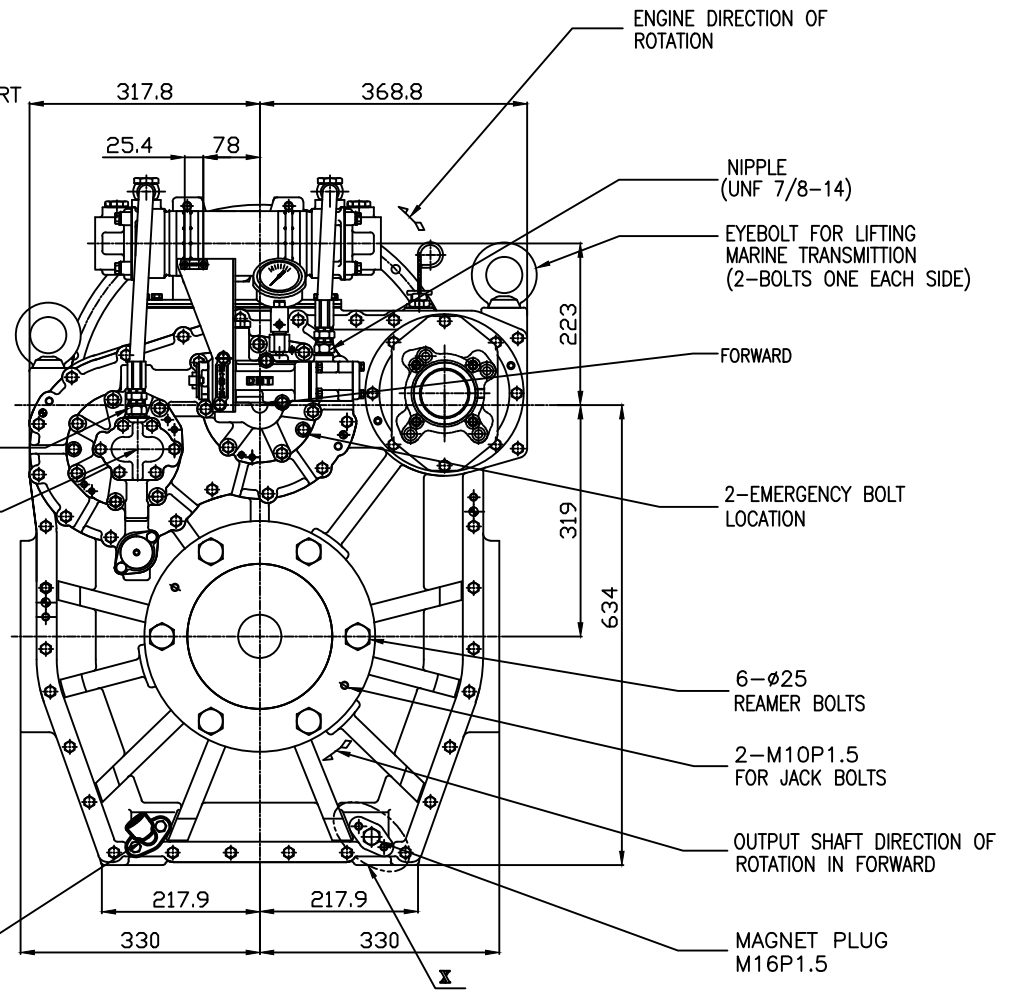
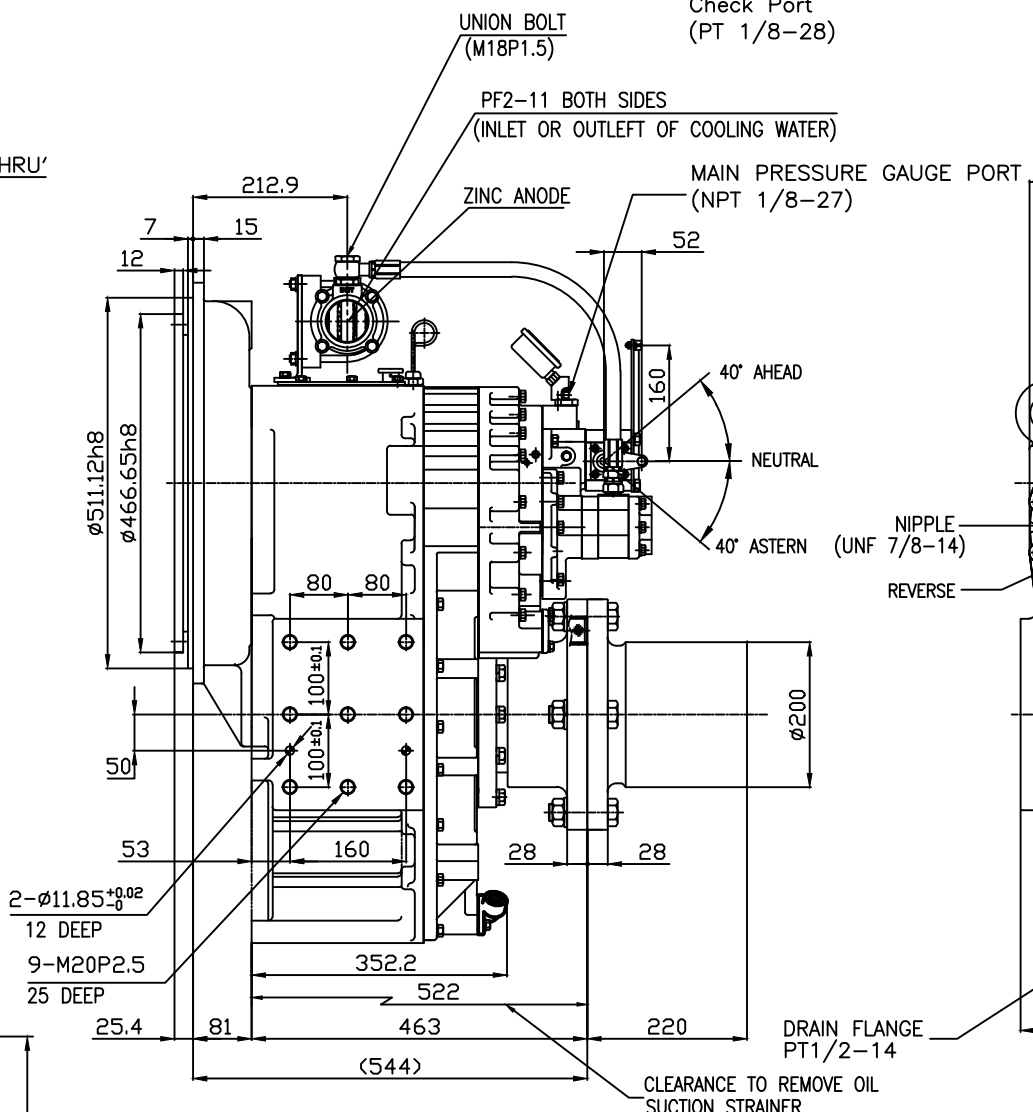
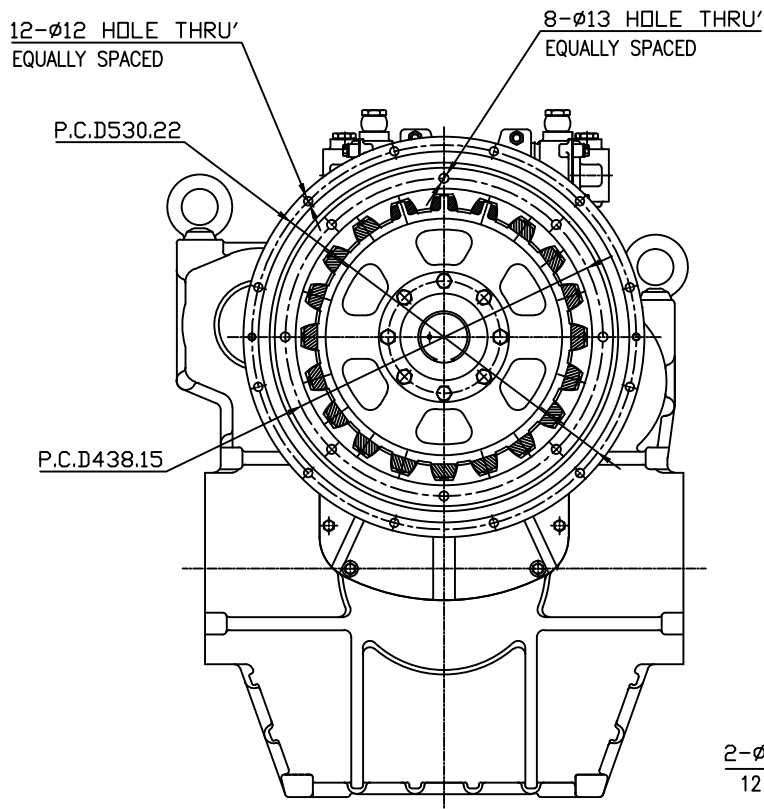


DMTP 7500 MARINE TRANSMISSION SPECIFICATION	
GEAR RATIO	3.56, 4.13, 4.59
TOTAL WEIGHT	APPROX. 900 Kg(DRY)
OIL CAPACITY	APPROX. 18 L
OIL VISCOSITY	SAE # 30
OIL PRESSURE	1.96 ~ 2.54 MPa CLUTCH OIL
DIRECTION OF ROTATION	INPUT C.C.W VIEWED FROM THE STERN OUTPUT C.W VIEWED FROM THE STERN
OIL CHANGE INTERVAL	THE FIRST 100HOURS OF INITIAL OPERATION AND EVERY 1000HOURS THEREAFTER
SHIFTING LIMIT	UNDER 50% OF THE RATED ENGINE SPEED
OIL COOLER	WATER FLOW 40 ~ 60 L/m TEMPERATURE OF COOLING WATER MAX 32'
OPERATING TORQUE OF SHIFTING LEVER	UNDER 2.94Nm



REMARK  
1.HOUSING: SAE#1  
2.DRIVING RING: SAE 14"  
3.COULING TYPE : RUBBER

TOLERANCE ON		PART NO.		PART NAME		QTY		MATERIAL		REMARKS	
FRACTIONS	DECIMALS	NO.	REV.	NAME	QTY	SIZE	REMARKS	TYPE	ORIGINAL DWG. NO.	REV.	REMARKS
±0.05	±0.05	JK.Kim	KS.Han	KC.Yoon				DMTP7500			
±0.1	±0.1	APPROVED BY	CHECKED BY	DESIGNED				MARINE TRANSMISSION			
±0.2	±0.2	DATE	SCALE								
±0.3	±0.3	2012.05.10	N/S								
±0.4	±0.4	JK.Kim	KS.Han	KC.Yoon							
±0.5	±0.5	DWG. NO.									
±0.6	±0.6	75000GA~C-114RC									
±0.7	±0.7										
±0.8	±0.8										
±0.9	±0.9										
±1.0	±1.0										

D-I INDUSTRIAL