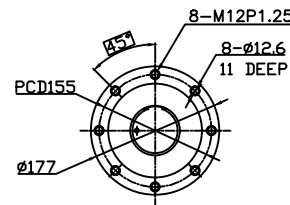
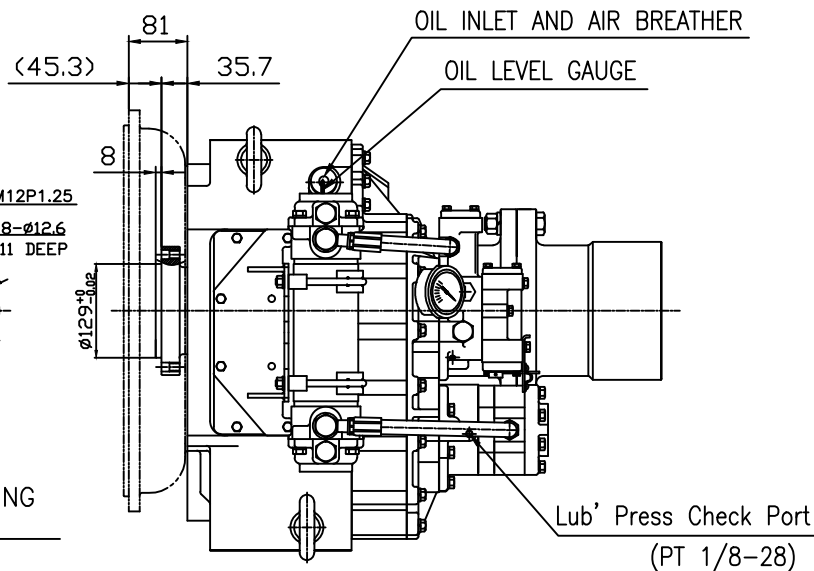


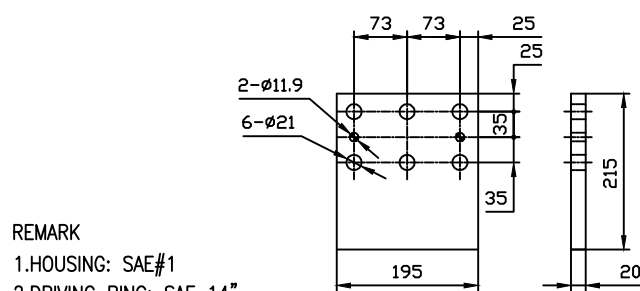
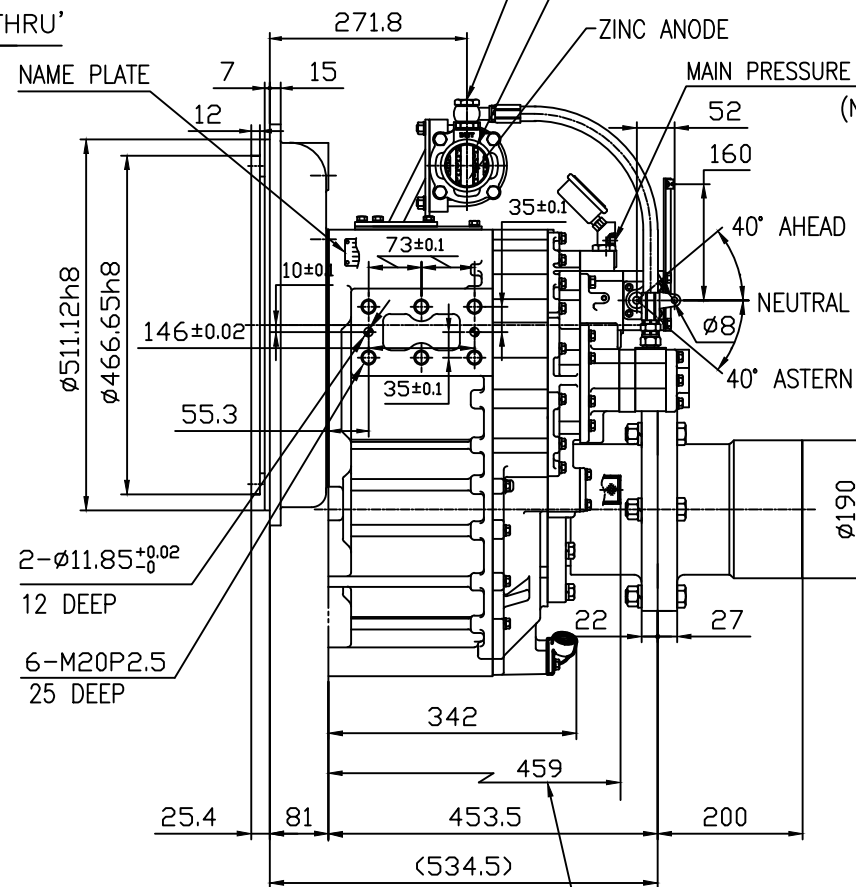
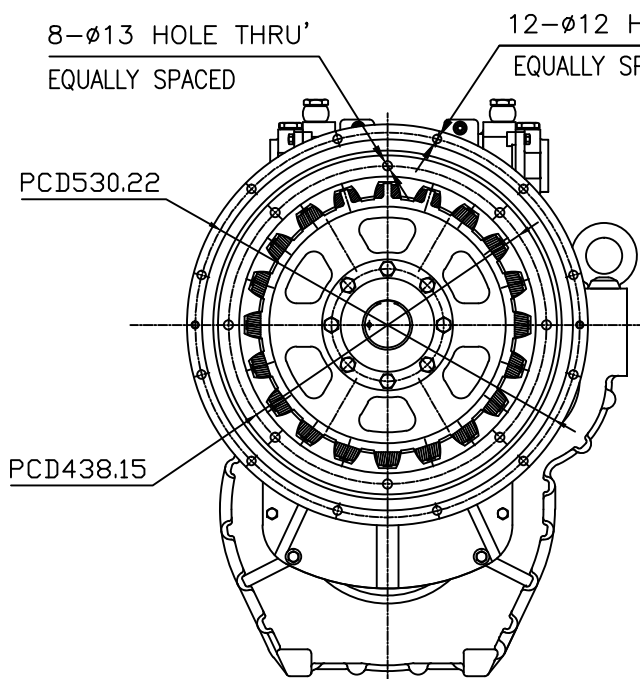
OUTPUT SHAFT COUPLING & PROPELLER COUPLING DIMENSION



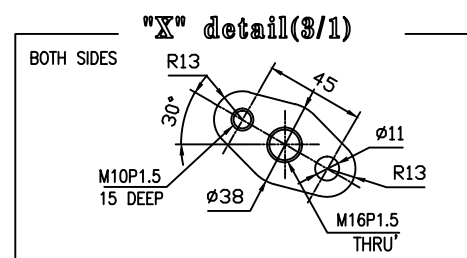
INPUT COUPLING DIMENSION



DMT260H MARINE TRANSMISSION SPECIFICATION	
GEAR RATIO	2.06, 2.50, 2.92, 3.26
TOTAL WEIGHT	APPROX. 490 Kg(DRY)
OIL CAPACITY	APPROX. 8 L
OIL VISCOSITY	SAE # 30
OIL PRESSURE	1.96 ~ 2.54 MPa CLUTCH OIL
DIRECTION OF ROTATION IN FORWARD	INPUT C.C.W VIEWED FROM THE STERN OUTPUT C.W VIEWED FROM THE STERN
OIL CHANGE INTERVAL	THE FIRST 100HOURS OF INITIAL OPERATION AND EVERY 1000HOURS THEREAFTER
SHIFTING LIMIT	UNDER 50% OF THE RATED ENGINE SPEED
OIL COOLER	WATER FLOW 60 ~ 80 L/min TEMPERATURE OF COOLING WATER MAX 32°C
OPERATING TORQUE OF SHIFTING LEVER	UNDER 2.94Nm

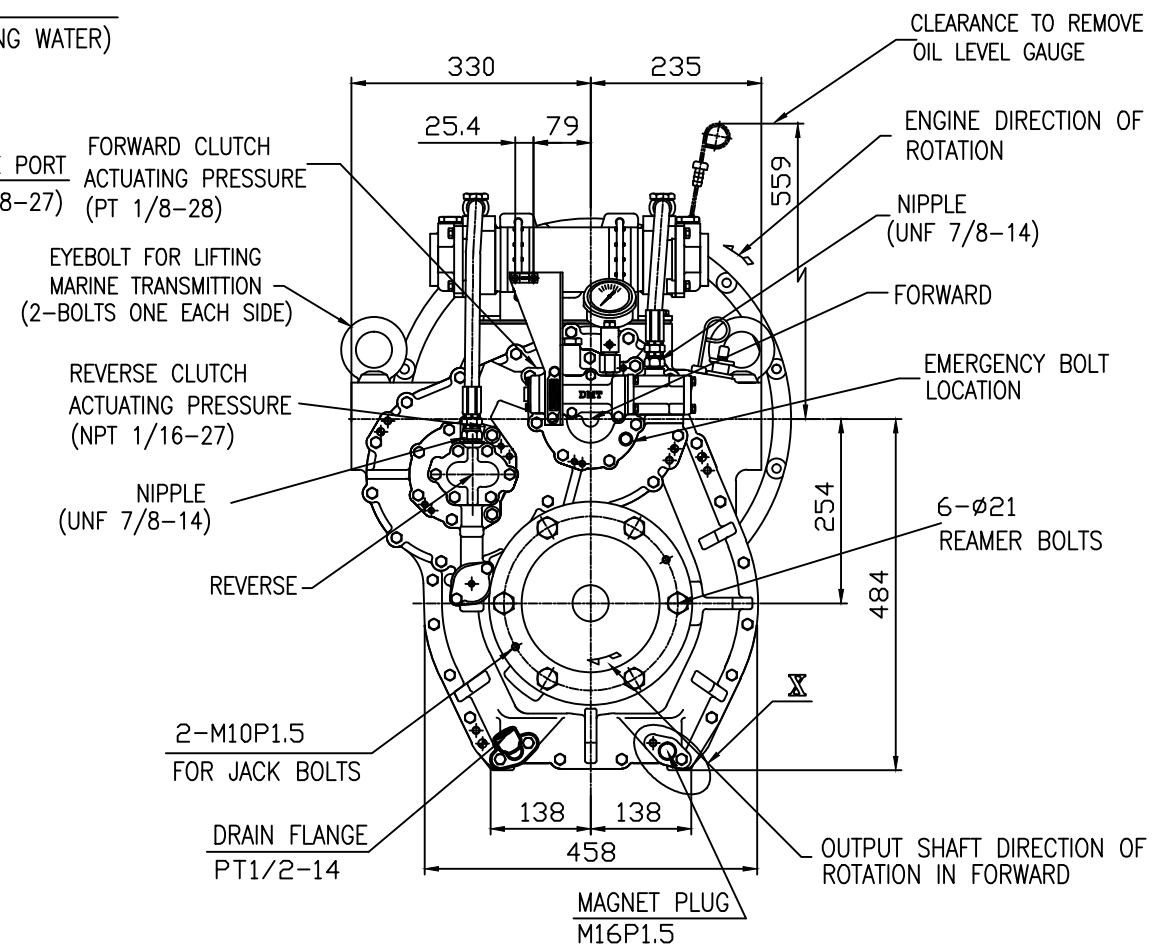


BRACKET DIMENSION



CLEARANCE TO REMOVE OIL SUCTION STRAINER

- REMARK
 1. HOUSING: SAE#1
 2. DRIVING RING: SAE 14"
 3. COULING TYPE : RUBBER



TOLERANCE ON		NO.	PART NO.	PART NAME	QTY	MATERIAL	SIZE	REMARKS
FRACTIONS	DECIMALS	ANGLES	MATERIAL		TYPE	DMT260H ORIGINAL DWG. NO.		
± 0.3	± 0.1	± 0.05	DATE	SCALE	MARINE TRANSMISSION			
± 0.5	± 0.2	± 0.07	2013.02.12	1/1	APPROVED BY: JK.Kim, KS.Han, KC.Yoon			
± 0.7	± 0.3	± 0.1	DRAWN		DWG. NO. 25000GA~D-114RC			
± 1.2	± 0.5	± 0.2	DESIGNED		REV. 000			
± 2.0	± 0.8	± 0.3	CHECKED BY		D-I INDUSTRIAL			