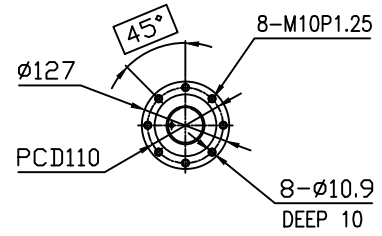
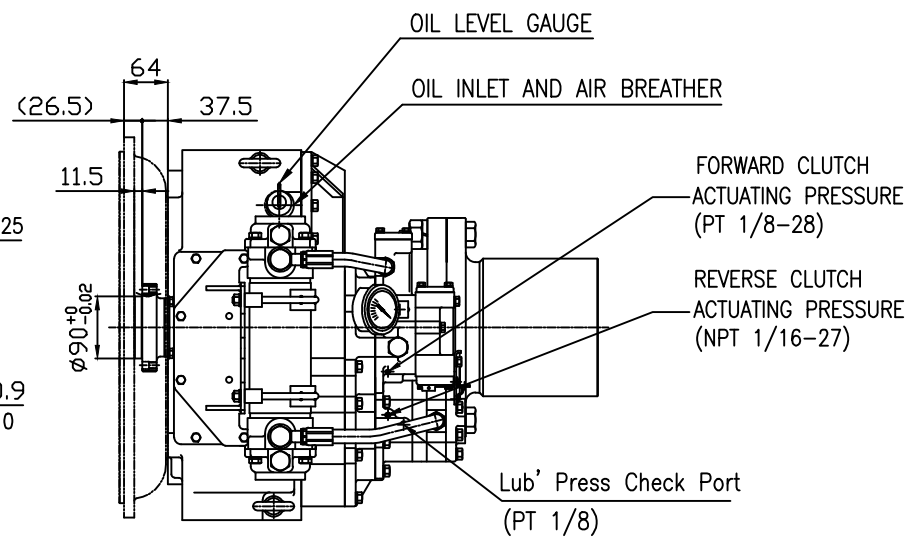


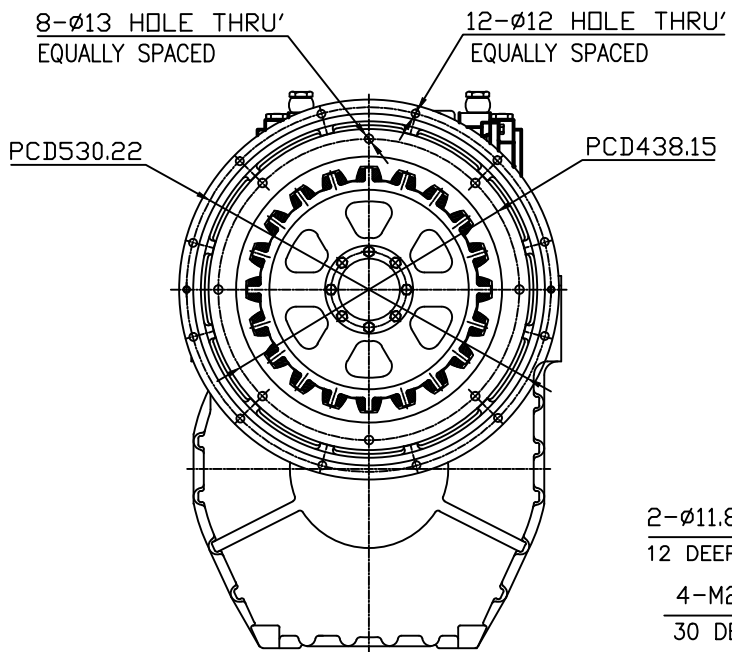
OUTPUT SHAFT COUPLING & PROPELLER COUPLING DIMENSION



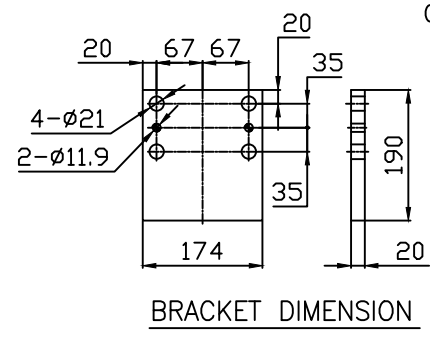
INPUT COUPLING DIMENSION



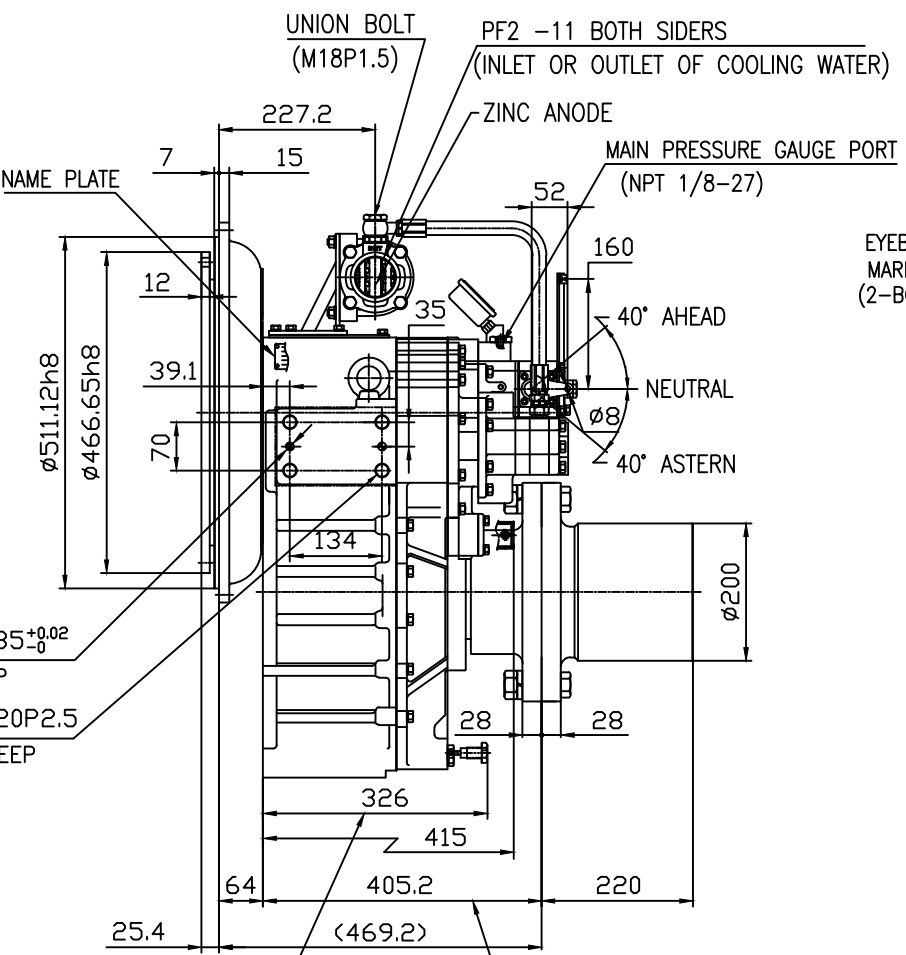
DMT 200HL MARINE TRANSMISSION SPECIFICATION			
GEAR RATIO	4.04, 4.48		
TOTAL WEIGHT	APPROX. 380 kg(DRY)		
OIL CAPACITY	APPROX. 10 L		
OIL VISCOSITY	SAE # 30		
OIL PRESSURE	1.96 ~ 2.35 MPa	CLUTCH OIL	
DIRECTION OF ROTATION	INPUT	C.C.W VIEWED FROM THE STERN	
	OUTPUT	C.W VIEWED FROM THE STERN	
OIL CHANGE INTERVAL	THE FIRST 100HOURS OF INITIAL OPERATION AND EVERY 1000HOURS THEREAFTER		
SHIFTING LIMIT	UNDER 50% OF THE RATED ENGINE SPEED		
OIL COOLER	WATER FLOW 40 ~ 60L/min		TEMPERATURE OF COOLING WATER MAX 32°C
	OPERATING TORQUE OF SHIFTING LEVER		



REMARK
 1.HOUSING: SAE#1
 2.DRIVING RING: SAE 14"
 3.COULING TYPE : RUBBER

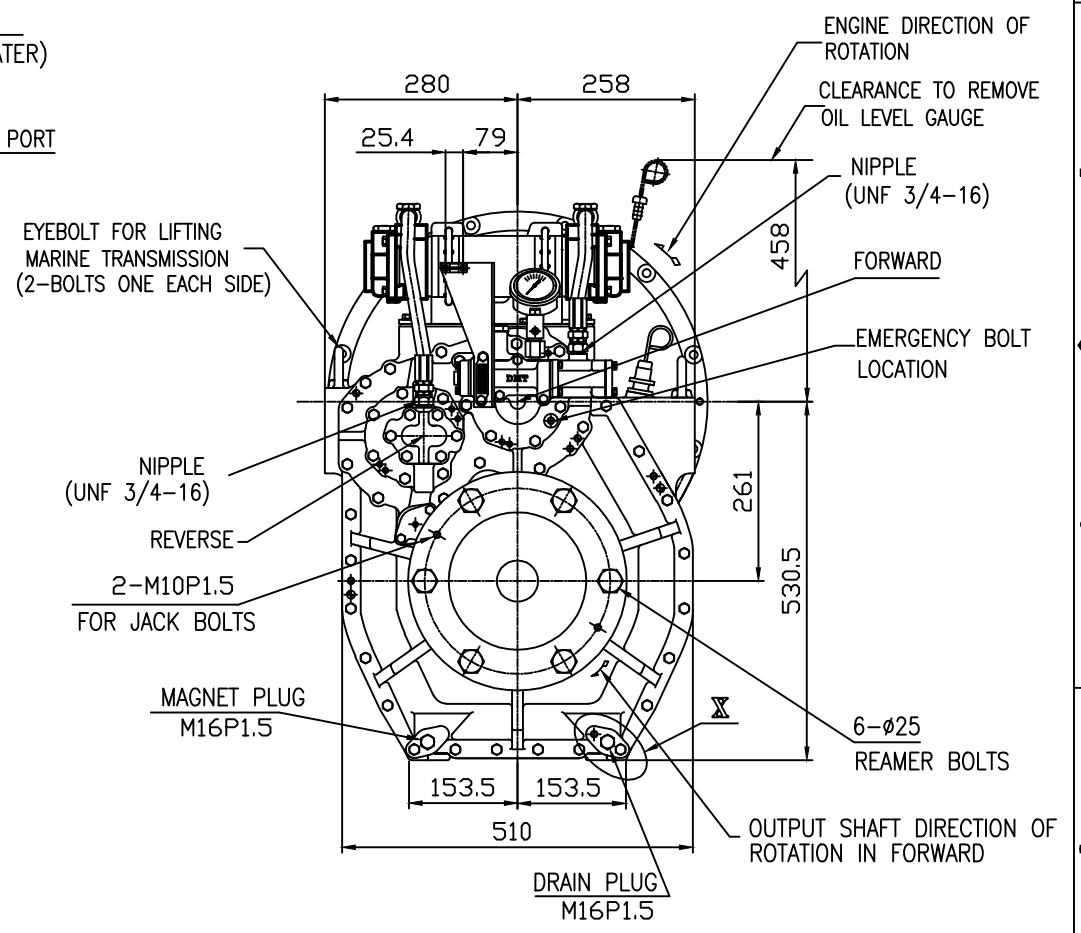
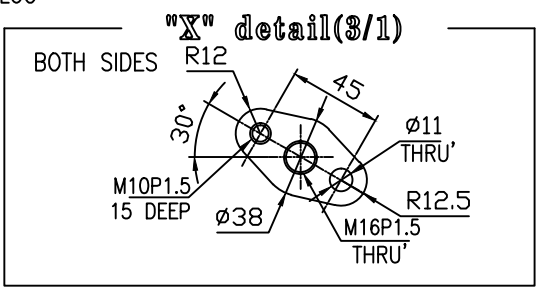


BRACKET DIMENSION



CLEARANCE TO REMOVE MAGNET PLUG

CLEARANCE TO REMOVE OIL SUCTION STRAINER



TOLERANCE ON				PART NO.		PART NAME		QTY	MATERIAL	SIZE	REMARKS
FRACTIONS	DECIMALS	ANGLES	±	NO.	NAME	SCALE	TYPE	DMT200HL ORIGINAL DWG. NO.			
± 0.3	± 0.1	± 0.05	±	2013.02.12	MARINE TRANSMISSION	1/1	TYPE	DMT200HL ORIGINAL DWG. NO.			
± 0.5	± 0.2	± 0.07	±	APPROVED BY	CHKD BY	DRAWN	DESIGNED	MARINE TRANSMISSION			
± 0.7	± 0.3	± 0.1	±	JK.Kim	KS.Han	KC.Yoon		DWG. NO. 20000GHB~C-114RC (REV.) 000			
± 1.2	± 0.5	± 0.2	±	D-I INDUSTRIAL		SIZE		CODE ID. NO.			
± 2.0	± 0.8	± 0.3	±	A 3							