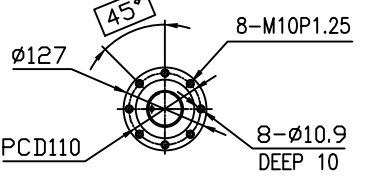
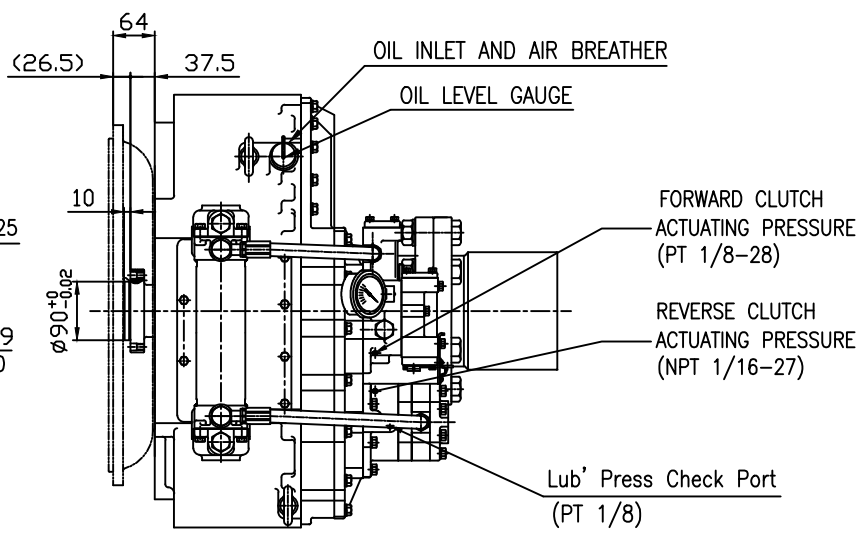


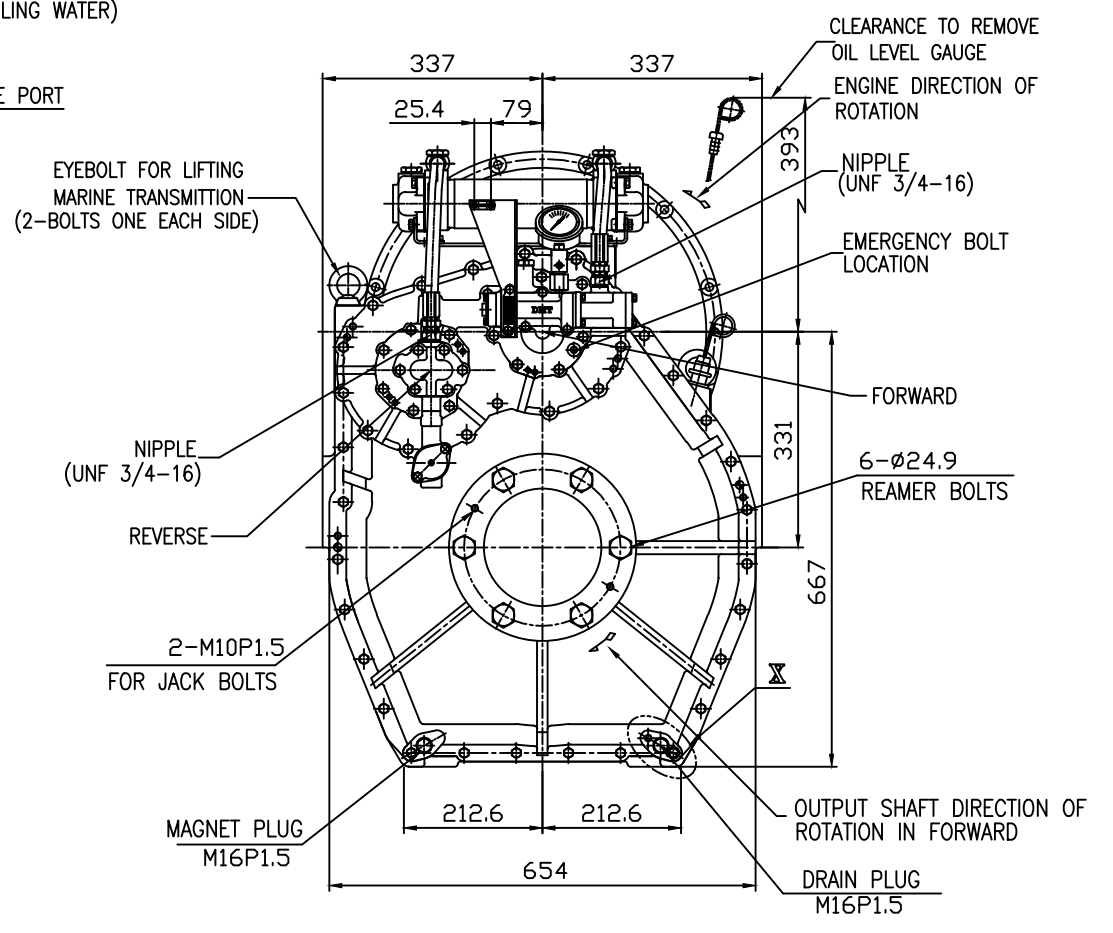
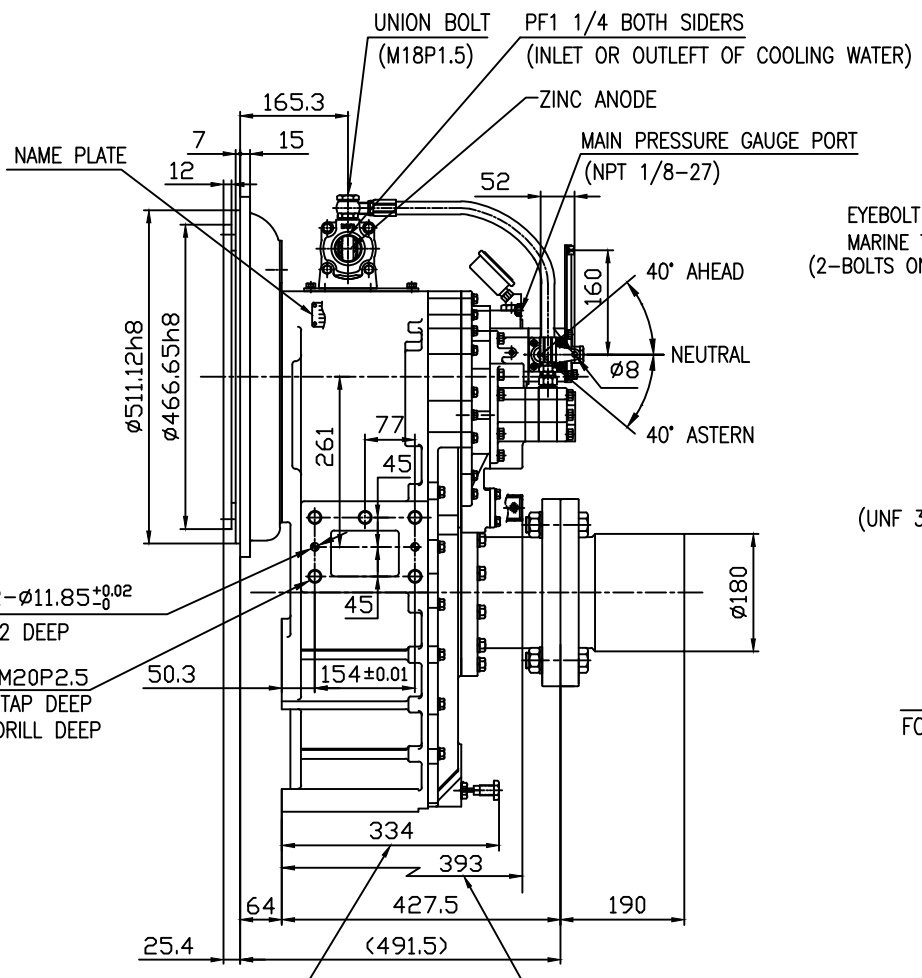
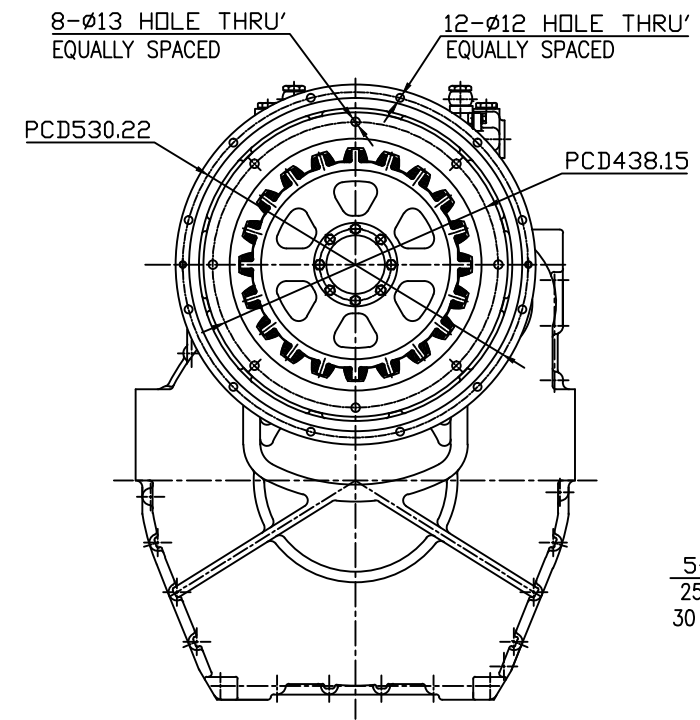
OUTPUT SHAFT COUPLING & PROPELLER COUPLING DIMENSION



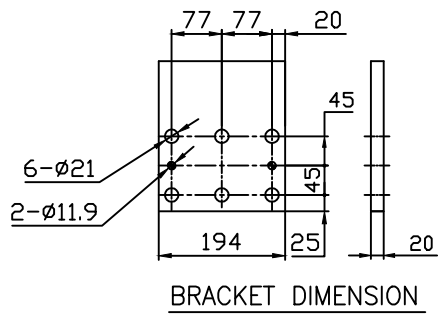
INPUT COUPLING DIMENSION



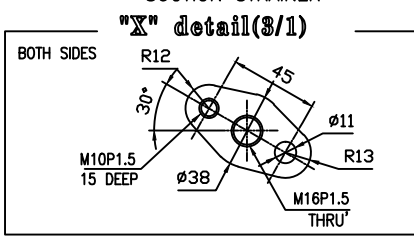
DMT180HL MARINE TRANSMISSION SPECIFICATION	
GEAR RATIO	5.15, 5.96
TOTAL WEIGHT	APPROX. 475 Kg(DRY)
OIL CAPACITY	APPROX. 18 L
OIL VISCOSITY	SAE # 30
OIL PRESSURE	1.96 ~ 2.35 MPa CLUTCH OIL
DIRECTION OF ROTATION	INPUT C.C.W VIEWED FROM THE STERN
	OUTPUT C.W VIEWED FROM THE STERN
OIL CHANGE INTERVAL	THE FIRST 100HOURS OF INITIAL OPERATION AND EVERY 1000HOURS THEREAFTER
SHIFTING LIMIT	UNDER 50% OF THE RATED ENGINE SPEED
OIL COOLER	WATER FLOW 40 ~ 60 L/m
	TEMPERATURE OF COOLING WATER MAX 32°C
OPERATING TORQUE OF SHIFTING LEVER	UNDER 2.94Nm



REMARK
 1. HOUSING: SAE#1
 2. DRIVING RING: SAE 14"
 3. COUPLING TYPE : RUBBER



BRACKET DIMENSION



TOLERANCE ON		PART NO.	PART NAME	QTY	MATERIAL	SIZE	REMARKS
FRACTIONS	DECIMALS						
±	±						
ANGLES		MATERIAL					
±		DATE 2012.06.18 SCALE N/S					
±		APPROVED BY JK.Kim		CHECKED BY KS.Han		DRAWN KC.Yoon	
1	16	± 0.3	± 0.1	± 0.05	TYPE DMT180HL		
4	16	± 0.5	± 0.2	± 0.07	NAME MARINE TRANSMISSION		
16	63	± 0.7	± 0.3	± 0.1	DWG. NO. 18000GHA~B-114RC		
63	250	± 1.2	± 0.5	± 0.2	REV. 000		
250	1000	± 2.0	± 0.8	± 0.3	D-I INDUSTRIAL		