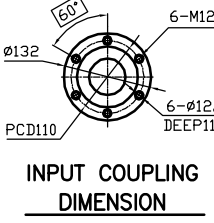
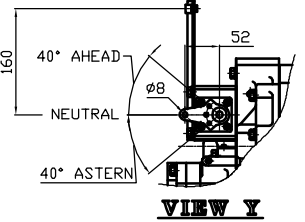
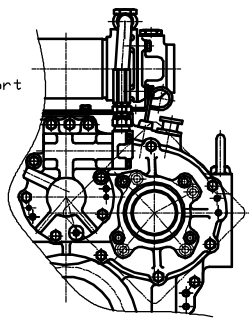
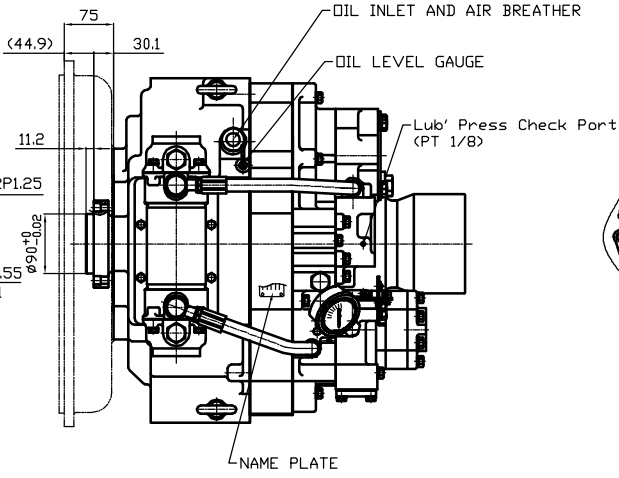


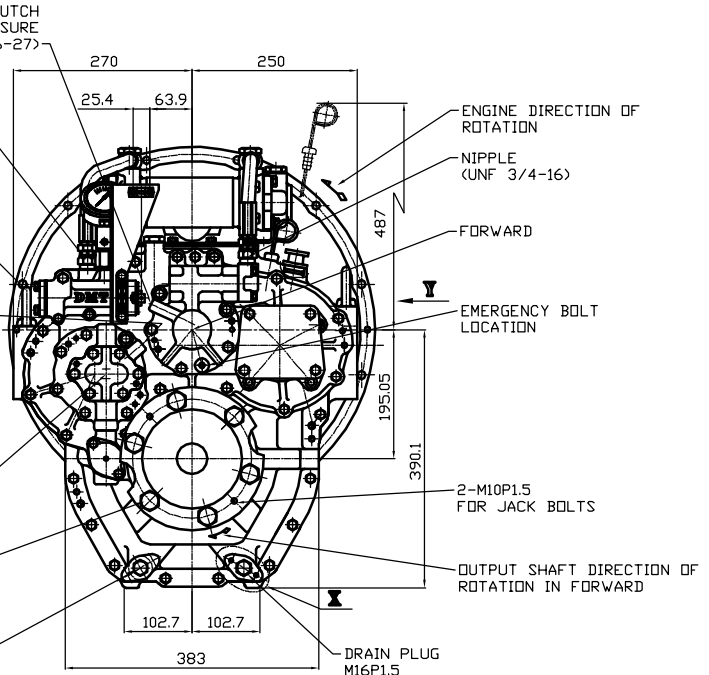
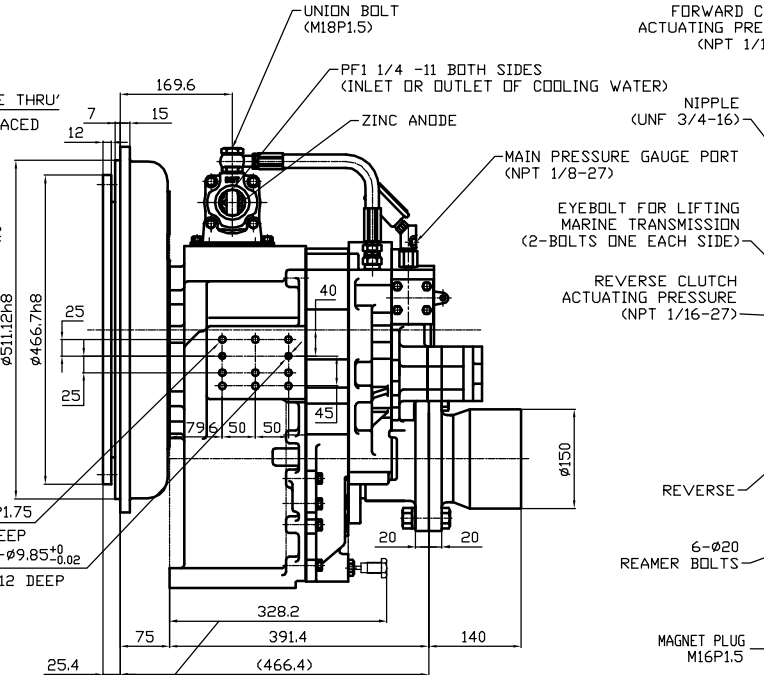
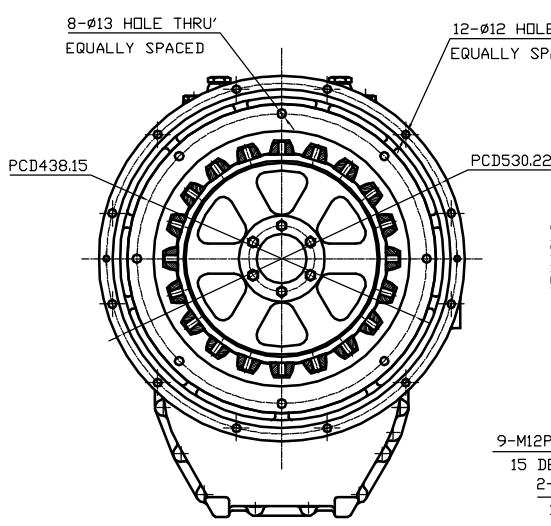
OUTPUT SHAFT COUPLING & PROPELLER COUPLING DIMENSION



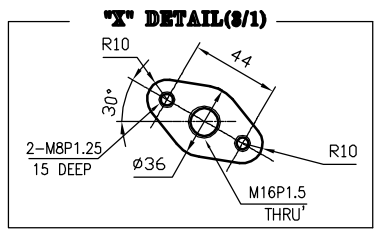
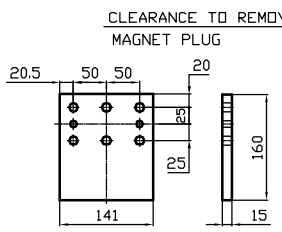
INPUT COUPLING DIMENSION



| DMTP 5100S/M/L MARINE TRANSMISSION SPECIFICATION | | | |
|--|--|-----------------------------|----------|
| GEAR RATIO | 1.47, 1.76, 1.93, 2.48, 3.08, 3.46 | | |
| TOTAL WEIGHT | APPROX. 297 kg(DRY) | | |
| OIL CAPACITY | APPROX. 5 L | | |
| OIL VISCOSITY | SAE # 30 | | |
| OIL PRESSURE | 1.96 ~ 2.35 MPa | CLUTCH OIL | |
| DIRECTION OF ROTATION | INPUT | C.C.W VIEWED FROM THE STERN | |
| | OUTPUT | C.W VIEWED FROM THE STERN | |
| OIL CHANGE INTERVAL | THE FIRST 100HOURS OF INITIAL OPERATION AND EVERY 1000HOURS THEREAFTER | | |
| SHIFTING LIMIT | UNDER 50% OF THE RATED ENGINE SPEED | | |
| OIL COOLER | WATER FLOW 40 ~ 60L/min | | MAX 32°C |
| | TEMPERATURE OF COOLING WATER | | MAX 32°C |
| OPERATING TORQUE OF SHIFTING LEVER | UNDER 2.94Nm | | |



REMARK
1.HOUSING: SAE#1
2.DRIVING RING: SAE 14"
3.COULING TYPE : RUBBER



| TOLERANCE ON | | | PART NO. | | PART NAME | | QTY | | MATERIAL | | SIZE | | REMARKS | |
|----------------|----------|--------|------------|------|-----------|------|--------------|--|----------|--|---------------------|--|---------|--|
| FRACTIONS | DECIMALS | ANGLES | NO. | REV. | NO. | REV. | | | | | | | | |
| ± | ± | ± | | | | | | | | | | | | |
| MATERIAL | | | DATE | | SCALE | | TYPE | | TYPE | | ORIGINAL DWG. NO. | | | |
| MATERIAL | | | 2012.06.18 | | N/S | | | | DMTP5100 | | | | | |
| APPROVED BY | | | CHECKED BY | | DRAWN | | NAME | | NAME | | MARINE TRANSMISSION | | | |
| JK.Kim | | | KS.Han | | KC.Yoon | | | | DWG. NO. | | 51000GA~F-114RC | | | |
| | | | | | | | | | REV. | | 000 | | | |
| D-I INDUSTRIAL | | | SIZE | | A 3 | | CODE ID. NO. | | | | | | | |