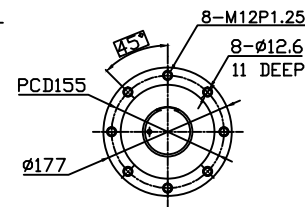
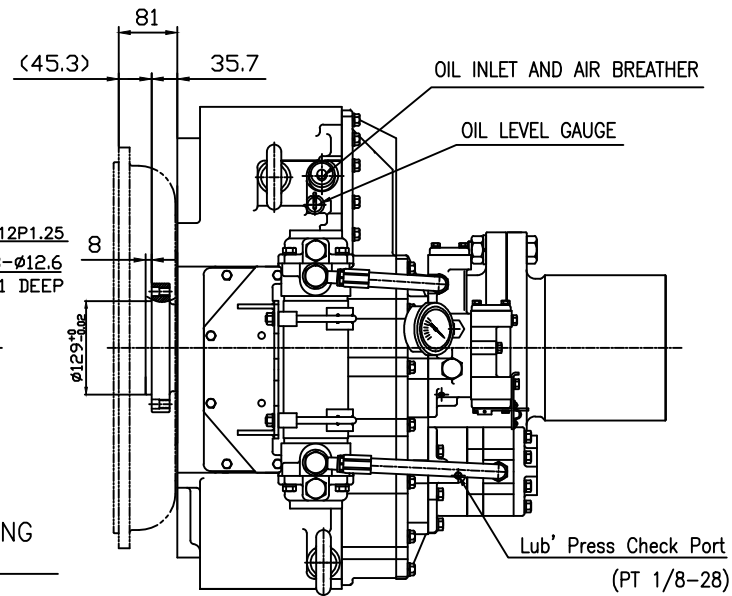


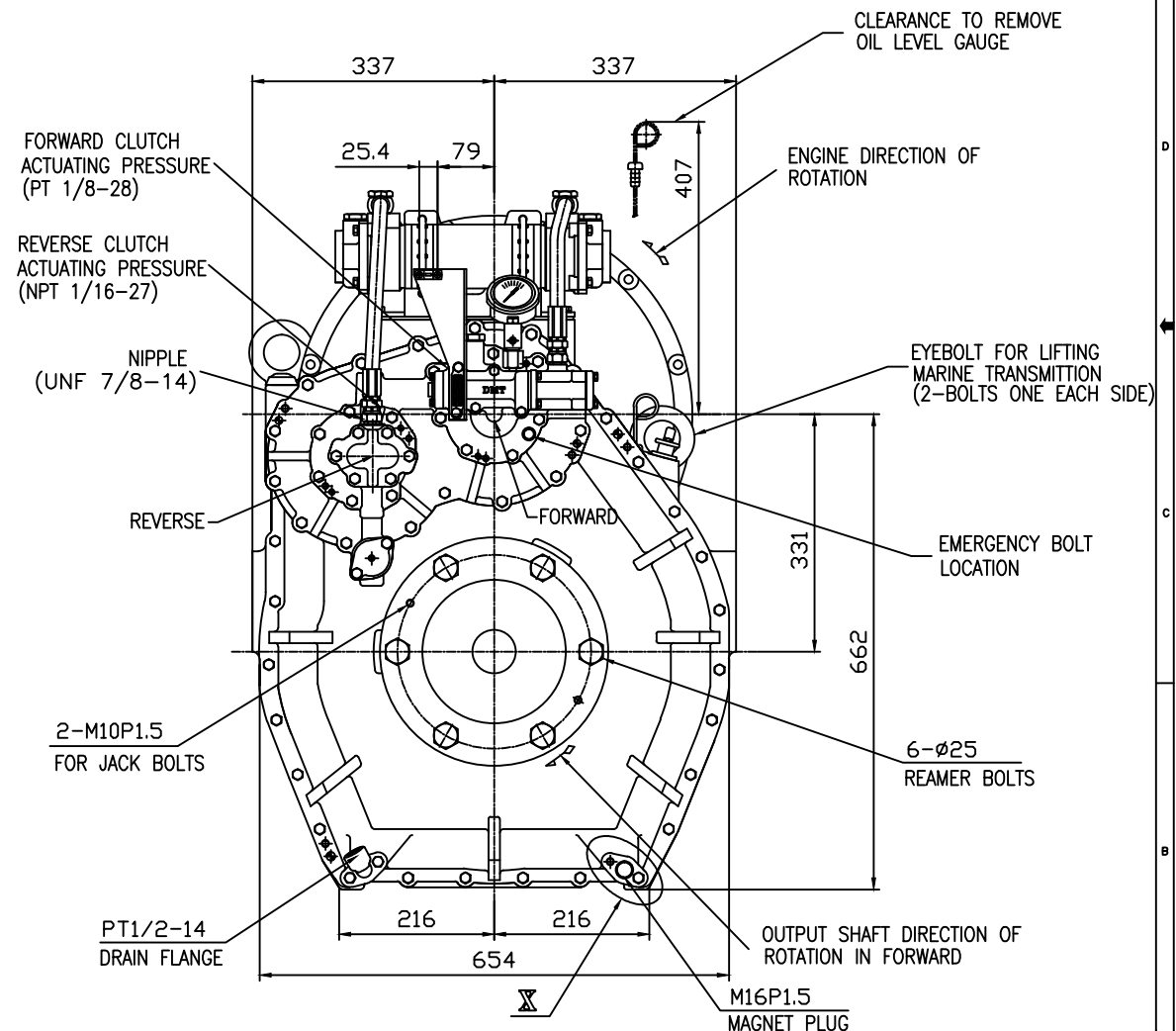
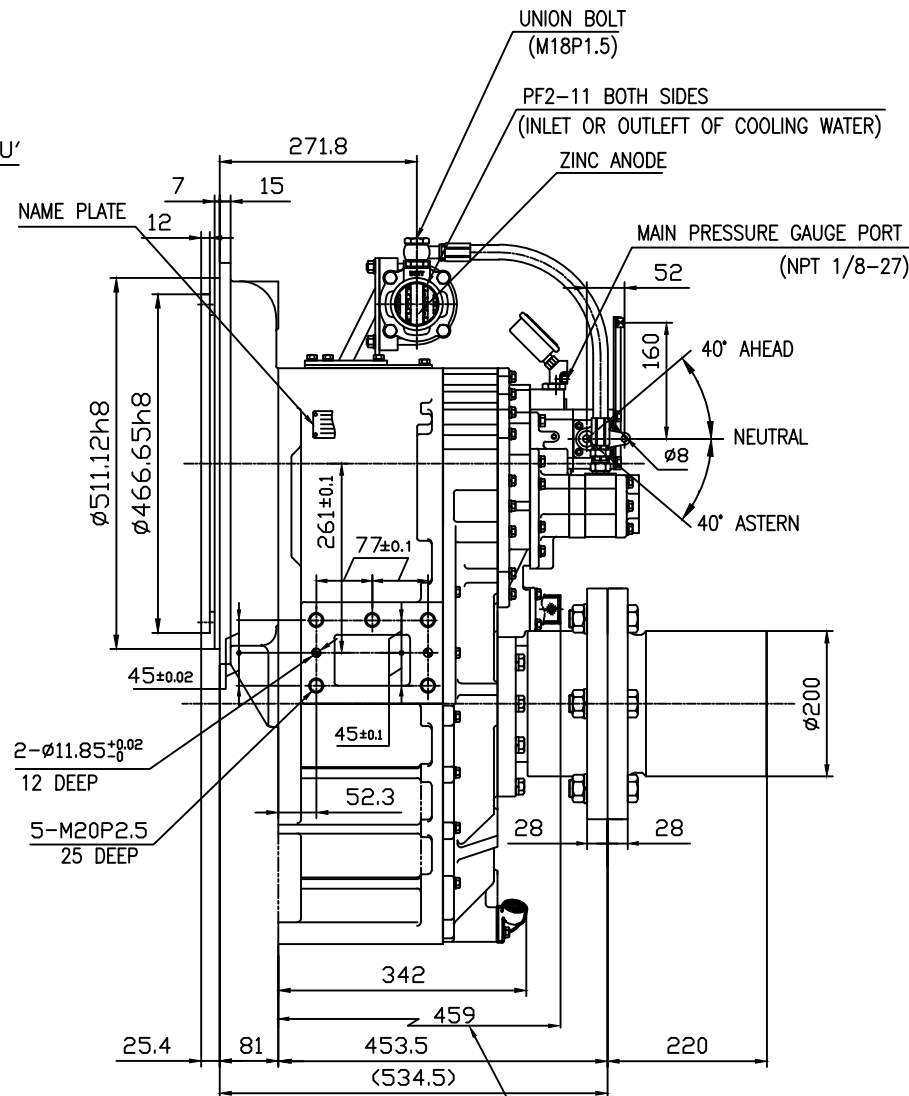
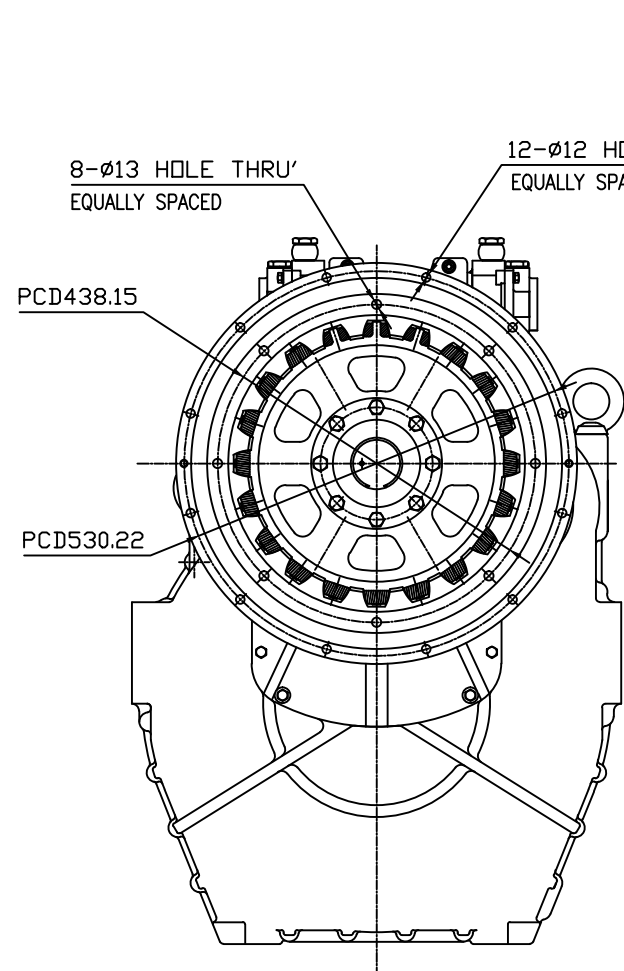
OUTPUT SHAFT COUPLING & PROPELLER COUPLING DIMENSION



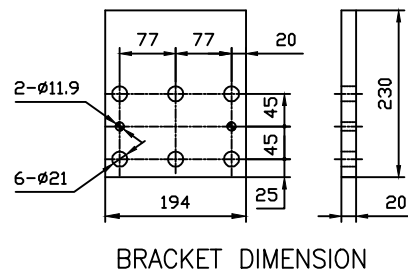
INPUT COUPLING DIMENSION



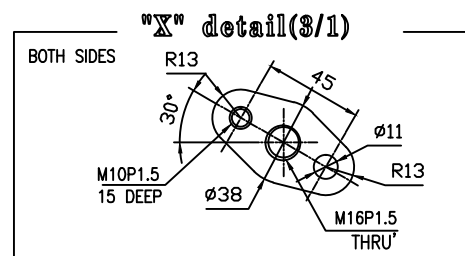
DMT280HL MARINE TRANSMISSION SPECIFICATION	
GEAR RATIO	3.53, 4.08, 4.52
TOTAL WEIGHT	APPROX. 640 Kg(DRY)
OIL CAPACITY	APPROX. 19 L
OIL VISCOSITY	SAE # 30
OIL PRESSURE	1.96 ~ 2.54 MPa CLUTCH OIL
DIRECTION OF ROTATION	INPUT C.C.W VIEWED FROM THE STERN
IN FORWARD	OUTPUT C.W VIEWED FROM THE STERN
OIL CHANGE INTERVAL	THE FIRST 100HOURS OF INITIAL OPERATION AND EVERY 1000HOURS THEREAFTER
SHIFTING LIMIT	UNDER 50% OF THE RATED ENGINE SPEED
OIL COOLER	WATER FLOW 60 ~ 80 L/min
	TEMPERATURE OF COOLING WATER MAX 32°C
OPERATING TORQUE OF SHIFTING LEVER	UNDER 2.94Nm



REMARK
 1.HOUSING: SAE#1
 2.DRIVING RING: SAE 14"
 3.COULING TYPE : RUBBER



BRACKET DIMENSION



BOTH SIDES

TOLERANCE ON		PART NO.		PART NAME		QTY		MATERIAL		SIZE		REMARKS	
FRACTIONS	DECIMALS	NO.	REV.	NO.	REV.	QTY	REV.	MATERIAL	SIZE	REMARKS	REV.	NO.	NO.
± 0.05	± 0.05	DMT280HL		MARINE TRANSMISSION									
± 0.1	± 0.1	DATE	2013.02.12	SCALE	1/1								
± 0.2	± 0.2	APPROVED BY	JK.Kim	CHECKED BY	KS.Han	DRAWN	KC.Yoon	DESIGNED					
± 0.3	± 0.3	DWG. NO.	28000GHA~C-114RC	REV.	000								
± 0.5	± 0.5	SIZE	A3	CODE ID. NO.									
± 0.7	± 0.7	D-I INDUSTRIAL											
± 1.2	± 1.2												
± 1.5	± 1.5												
± 2.0	± 2.0												